

MLS Area SV

Listings	This Month			Year-to-Date		
	Sep 2021	Sep 2020	Change	2021	2020	Change
Single Family Sales	12	19	-36.8%	136	111	+22.5%
Condo/TH Sales	--	--	--	--	--	--
Total Sales	12	19	-36.8%	136	111	+22.5%
New Homes Only	--	2	--	11	8	+37.5%
Resale Only	12	17	-29.4%	125	103	+21.4%
Sales Volume	\$3,528,600	\$6,985,920	-49.5%	\$45,658,695	\$30,059,078	+51.9%
New Listings	17	12	+41.7%	162	140	+15.7%
Pending	5	16	-68.8%	9	119	-92.4%
Withdrawn	5	3	+66.7%	14	27	-48.1%
Expired	--	--	--	8	18	-55.6%
Months of Inventory	1.8	1.3	+45.1%	N/A	N/A	--

Average	This Month			Year-to-Date		
	Sep 2021	Sep 2020	Change	2021	2020	Change
List Price	\$284,267	\$381,495	-25.5%	\$339,060	\$279,972	+21.1%
List Price/SqFt	\$170	\$205	-16.9%	\$199	\$152	+30.6%
Sold Price	\$294,050	\$367,680	-20.0%	\$335,726	\$270,803	+24.0%
Sold Price/SqFt	\$175	\$197	-11.1%	\$197	\$147	+33.9%
Sold Price / Orig LP	101.8%	94.9%	+7.2%	98.7%	93.9%	+5.2%
Days on Market	17	78	-78.3%	27	70	-61.4%

Median	This Month			Year-to-Date		
	Sep 2021	Sep 2020	Change	2021	2020	Change
List Price	\$282,400	\$279,900	+0.9%	\$292,450	\$250,000	+17.0%
List Price/SqFt	\$161	\$150	+7.1%	\$176	\$140	+25.6%
Sold Price	\$291,000	\$262,500	+10.9%	\$299,950	\$241,900	+24.0%
Sold Price/SqFt	\$168	\$144	+16.8%	\$180	\$133	+34.7%
Sold Price / Orig LP	100.0%	97.0%	+3.1%	100.0%	96.0%	+4.2%
Days on Market	6	49	-87.8%	12	45	-74.4%

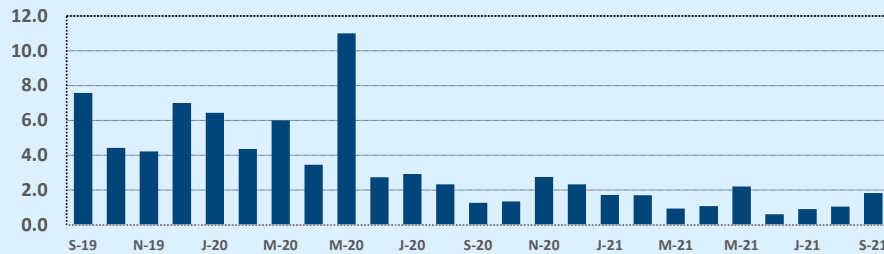
Residential Statistics

Independence Title

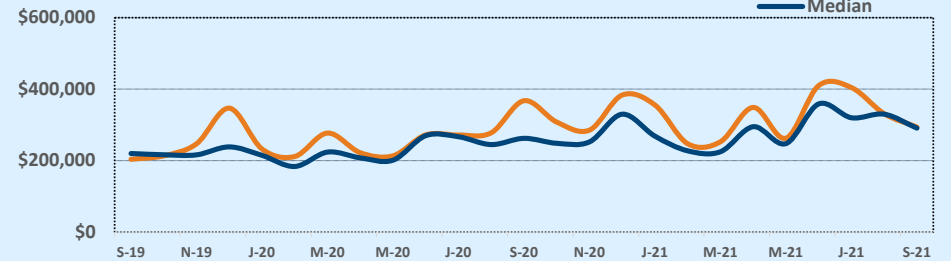
September 2021

Price Range	This Month			Year-to-Date		
	New	Sales	DOM	New	Sales	DOM
\$149,999 or under	1	1	96	11	15	52
\$150,000- \$199,999	1	1	6	16	13	28
\$200,000- \$249,999	1	1	6	25	23	24
\$250,000- \$299,999	5	4	16	30	17	26
\$300,000- \$349,999	3	1	5	21	21	16
\$350,000- \$399,999	--	2	11	17	13	22
\$400,000- \$449,999	1	2	2	10	11	13
\$450,000- \$499,999	1	--	--	6	4	8
\$500,000- \$549,999	1	--	--	1	2	49
\$550,000- \$599,999	2	--	--	5	2	5
\$600,000- \$699,999	--	--	--	5	6	25
\$700,000- \$799,999	--	--	--	6	3	48
\$800,000- \$899,999	--	--	--	3	4	74
\$900,000- \$999,999	--	--	--	1	2	12
\$1M - \$1.99M	--	--	--	4	--	--
\$2M - \$2.99M	--	--	--	--	--	--
\$3M+	1	--	--	1	--	--
Totals	17	12	17	162	136	27

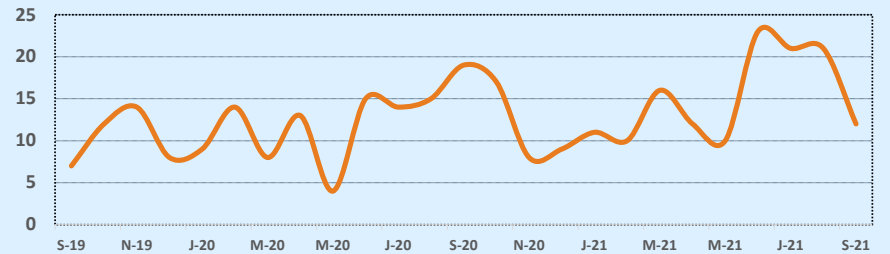
Months of Inventory - Last Two Years



Average & Median Sales Price - Last Two Years



Number of Sales - Last Two Years



Based on information from the Austin Board of REALTORS® (alternatively, from ACTRIS). Neither the Board nor ACTRIS guarantees or is in any way responsible for its accuracy. The Austin Board of REALTORS®, ACTRIS and their affiliates provide the MLS and all content therein "AS IS" and without any warranty, express or implied. Data maintained by the Board or ACTRIS may not reflect all real estate activity in the market.